

★ ★ ★ ★ ★ DO NOT MISS THIS! ★ ★ ★ ★ ★

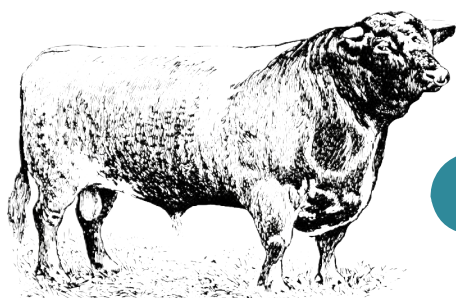
**ALSTON**  
**BAR & BEEF**



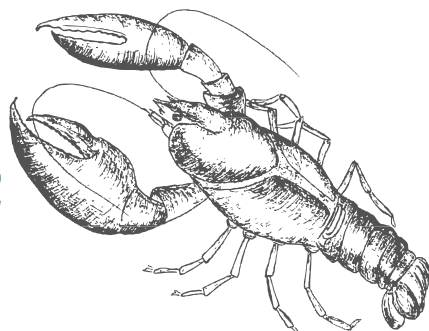
*Every*  
**WEDNESDAY**

THE PRIDE OF THE SEA VS THE FAVOURITE OF THE LAND

**BEEF**



**&**



**REEF**

WHO WILL BE YOUR WINNER?

500G SHARING  
RUMP STEAK

*and*

TWO GIANT  
TIGER PRAWNS



WITH SKINNY FRIES AND GARLIC BUTTER  
**PLUS** A BOTTLE OF HOUSE WINE

AVAILABLE EVERY WEDNESDAY 12PM-10PM. TERMS & CONDITIONS APPLY

PLAN  
of the City of  
GLASGOW.  
1783.

# ALSTON BAR & BEEF



ALSTON STREET WAS A BUSTLING THOROUGHFARE THAT CONNECTED ARGYLE STREET WITH GORDON STREET UNTIL THE MID-1870S WHEN ALL THE BUILDINGS WERE DEMOLISHED TO MAKE WAY FOR THE FIRST PHASE OF CENTRAL STATION.

IT RAN NORTH TO SOUTH THROUGH GRAHAMSTON, AN IMPORTANT LOCATION FOR GLASGOW'S GROWING INTERNATIONAL TRADE, PROVIDING PREMISES FOR PROCESSING AND STORING GOODS FOR DESPATCH TO COUNTRIES AROUND THE WORLD. THERE WERE SEVERAL LARGE WAREHOUSES AND A SUGAR REFINERY, SURROUNDED BY CARTERS' YARDS, TENEMENT DWELLINGS AND VILLAS.

THE 'FIRST THEATRE IN GLASGOW' OPENED IN ALSTON STREET IN 1764. IN FACT IT WAS NOT LOCATED IN GLASGOW BUT IN GRAHAMSTON, JUST A FEW YARDS OUTSIDE THE CITY BOUNDARY, BECAUSE THE CITY AND CHURCH ELDERS WOULD NOT ALLOW THE 'HOUSE OF THE DEVIL' TO BE OPENED WITHIN THE CITY.



[ALSTONMANCHESTER.CO.UK](http://ALSTONMANCHESTER.CO.UK)

CATHEDRAL ST | THE CORN EXCHANGE | MANCHESTER, M4 3TR  
0161 804 5555 | [INFO@ALSTONMANCHESTER.CO.UK](mailto:INFO@ALSTONMANCHESTER.CO.UK)