



EVENTS AND
CATERING

Exceptional Hospitality
in Unique Venues



EVENTS AND
CATERING

Quality, Creativity & Passion

GG Events and Catering was created with a desire to do things differently, and to deliver experiences with unparalleled service and inspired menus.

Our goal is to provide outstanding bespoke menus and a dedicated team to surprise and delight your guests. We pride ourselves on quality, creativity and passion to deliver an exceptional event for you.

Our journey so far has allowed us to work with iconic venues such as Manchester Cathedral and The National Football Museum, as well as our own ventures. The diversity of our portfolio ensures that we have an ideal venue for any occasion.

HOTEL FOOTBALL

CAFE FOOTBALL

NATIONAL
FOOTBALL
MUSEUM



EVENTS AND
CATERING



Manchester
Cathedral

MAHIKI
Tropical Cocktails and Island Grill

STOCK
EXCHANGE





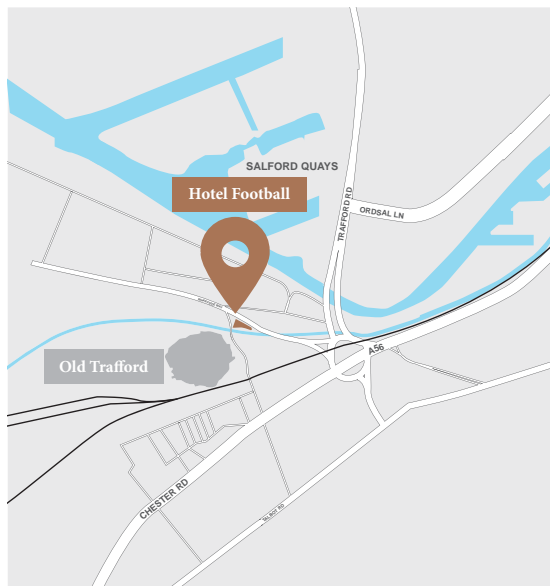
EVENTS AND
CATERING

HOTEL FOOTBALL

Events at Hotel Football Old Trafford are nothing less than spectacular. From dinners to parties, Bar Mitzvahs to weddings, business meetings to training days, your dedicated event planner can create any vision – the only limit is your imagination.







Address

99 Sir Matt Busby Way
M16 0SZ
@hotelfootballuk
meet@hotelfootball.com
+44 (0) 161 751 0434

Hotel Football Old Trafford

Bedrooms

- / 133 bedrooms
- / Standard, twin and executive rooms available
- / King size Hypnos beds
- / Rainforest shower
- / 40" TV with full Sky Sports package
- / Complimentary snack bar and soft drinks
- / Complimentary Wi-Fi
- / Parking available

Location

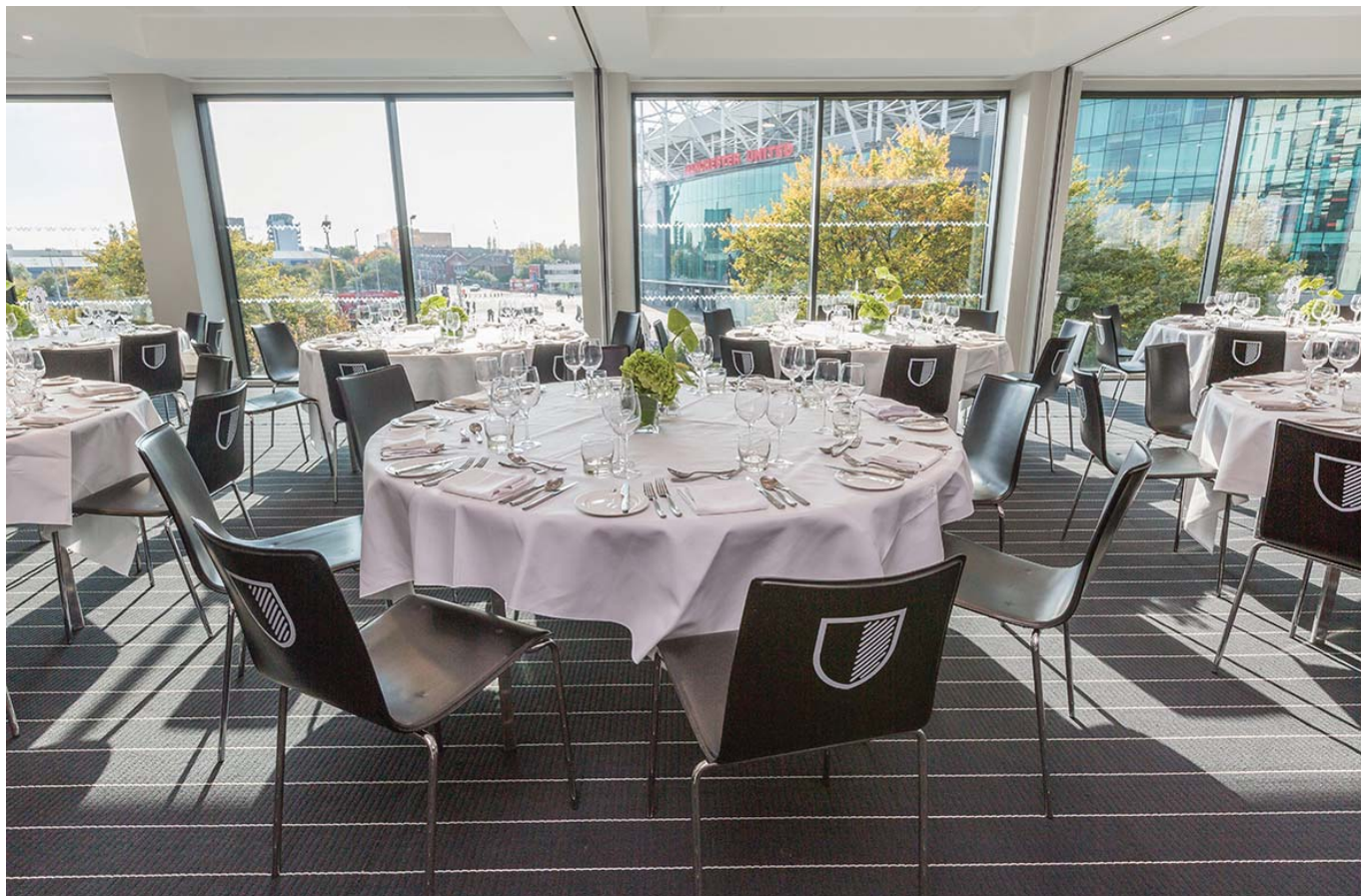
- / Located next to Old Trafford Stadium
- / 5 minutes from Media City
- / 10 minutes from Manchester city centre
- / 20 minutes from Manchester Airport
- / Excellent public transport and motorway links



Event spaces at Hotel Football

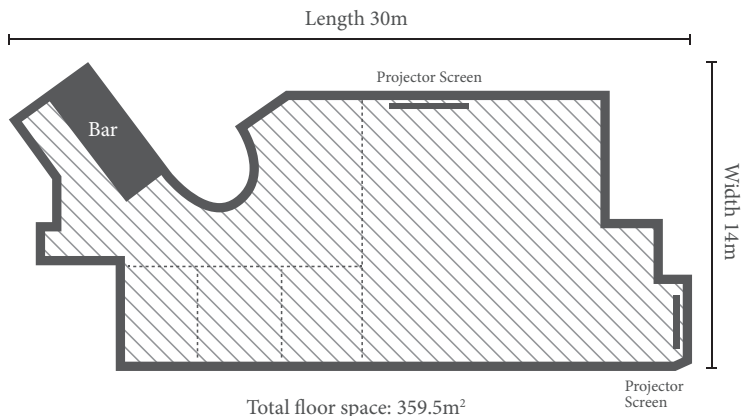
- / 5 unique event spaces
- / Overlooking Old Trafford Football Stadium
- / Natural daylight
- / Complimentary Wi-Fi
- / Integrated AV system
- / Dedicated event planner





Stadium Suite

Enjoy an event to remember in the Stadium Suite. This impressive space is suitable for any occasion, from hosting a gala dinner or award ceremony to a wedding for up to 250 guests. Overlooking Old Trafford Football Stadium, the prestigious backdrop will not fail to inspire.



- / Private bar and integrated AV system
- / Floor to ceiling windows
- / Overlooking Old Trafford Football Stadium
- / Inbuilt projector screens
- / 4 smaller partitioned spaces
- / Ideal for conferences, dinner and dancing

Dimensions

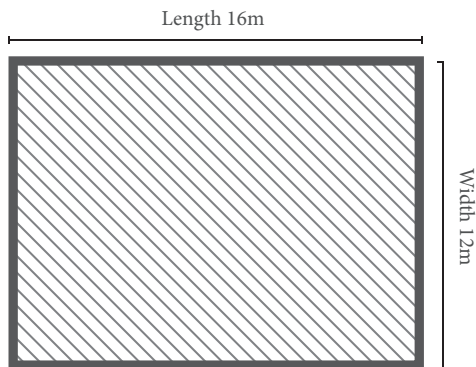
359.5m²

Reception: 300
Theatre: 300
Classroom: 200
Dinner Dance: 250
Cabaret: 220



Heaven

Our rooftop event space can cater for parties up to 200 guests and offers spectacular views of Old Trafford and Media City. Perfectly suited for drinks receptions, VIP events and team building activities, our experienced events team will be on hand to make the impossible possible.



Total floor space: 192m²

- / Retractable roof
- / Panoramic views
- / Pop-up bar
- / Integrated PA system
- / Licensed for wedding ceremonies
- / Live music venue

Dimensions

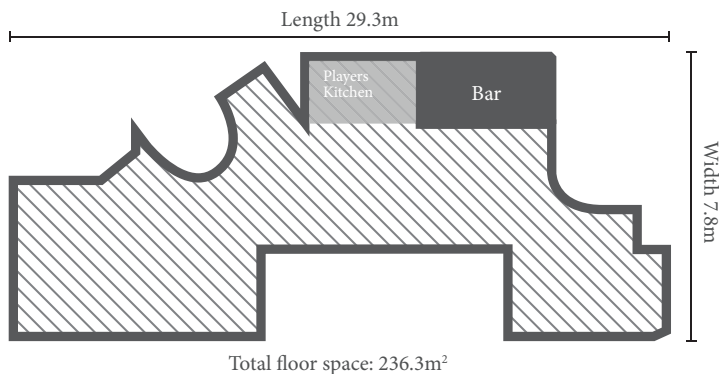
192m²

Reception: 200
Theatre: 150
Dinner Dance: 100



Players Lounge

Guests can enjoy a more relaxed approach in our Players Lounge. The space is tailored for networking events, informal dining and seminars. The Players Kitchen is a focal point within the lounge, which offers a casual dining experience ideal as a breakout space.



- / Inbuilt plasma screens
- / Players Kitchen
- / Private bar
- / Floor to ceiling windows
- / Natural daylight
- / Viewing gallery

Dimensions

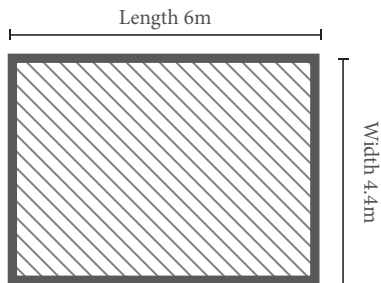
36.3m²

Reception: 200
Theatre: 100
Boardroom: 30
Classroom: 50
Private dining: 60
Cabaret: 60



92 Suite

Our 92 Suite is perfectly suited for that all-important meeting or private dinner. With breathtaking views of Old Trafford Football Stadium and unique pieces of Class of 92 memorabilia adorning the walls, this space offers something more exclusive for your guests.



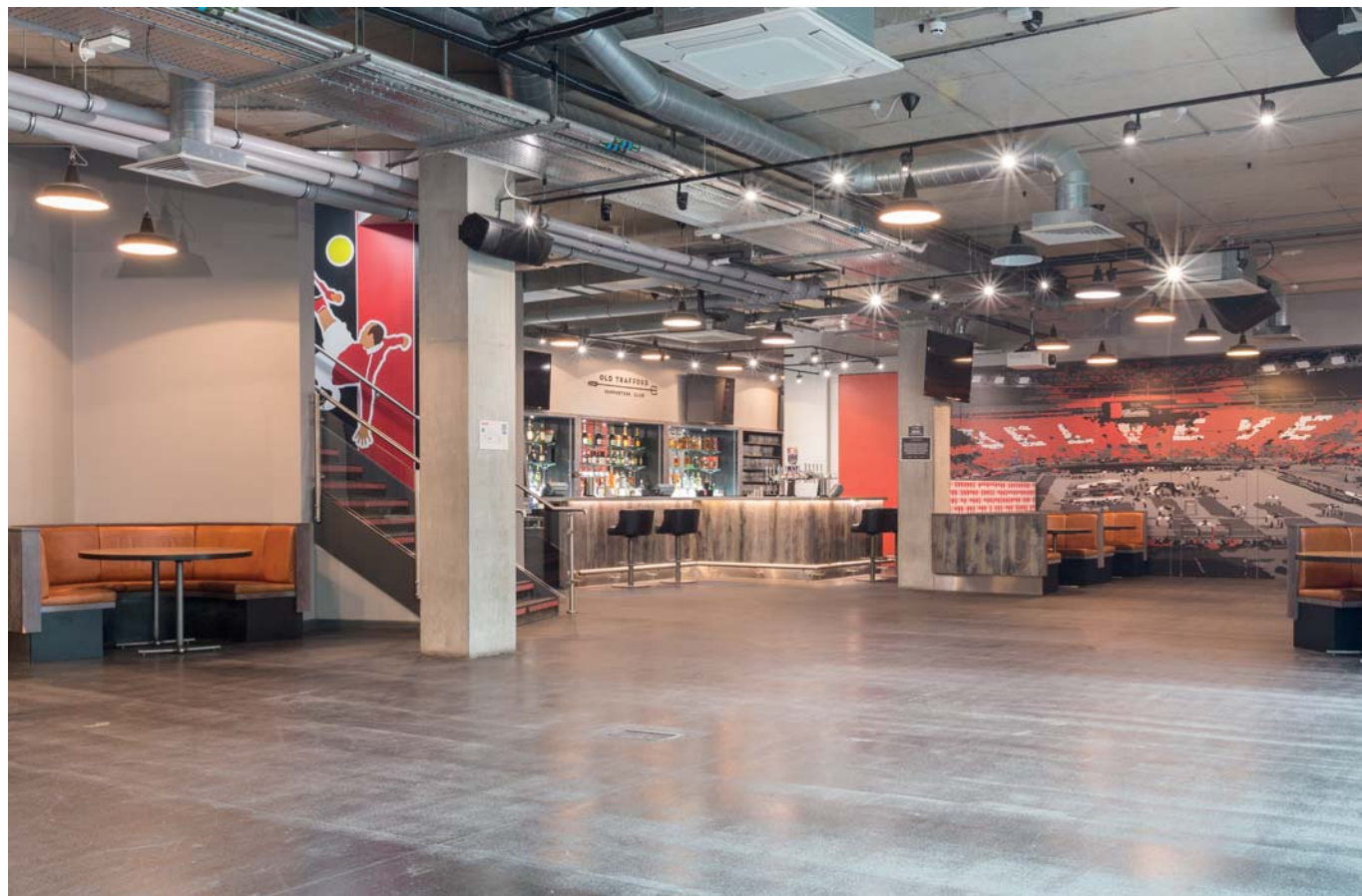
Total floor space: 26.4m²

- / Floor to ceiling dual aspect windows
- / Unrivalled views of Old Trafford
- / Ideal for private dining up to 14 guests
- / Unique pieces of football memorabilia
- / Quiet and private event space
- / Plasma TV screen
- / Bespoke menus available

Dimensions

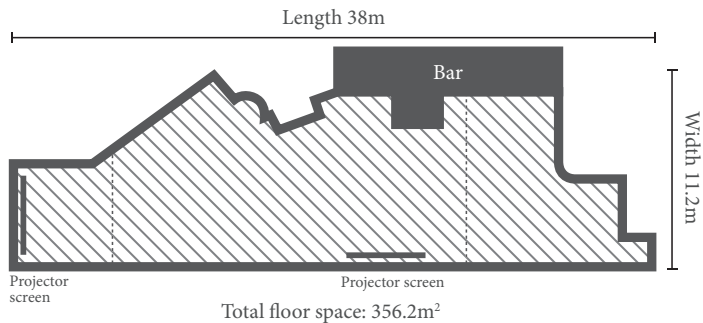
26.4m²

Boardroom: 14



Old Trafford Supporters Club

Old Trafford Supporters Club is the ultimate entertainment venue. This fantastic lower ground space, holding up to 550 guests, is tailored for exhibitions, live music, private screenings and Christmas parties. The large space lends itself as a venue for all occasions, and its inbuilt AV means you can host an event which makes an impact.



- / 32-foot bar
- / Integrated projector screens
- / Integrated AV
- / Mooring point for canal access
- / 8 x 62" Plasma screens
- / Private terrace
- / Ideal for live music

Dimensions

356.2m²

Reception: 550
Theatre: 150
Boardroom: 30
Dinner Dance: 150
Cabaret: 200



Packages at Hotel Football

- / Private dining and banqueting menus
- / Canapé packages
- / Bowl food packages
- / Buffet packages
- / Day delegate rates
- / Drinks packages
- / Charity menus
- / Pitch hire
- / Children's parties
- / Match day hospitality
- / Wedding ceremonies & packages
- / Dry room hire rates
- / Team building activities

Prices available on request





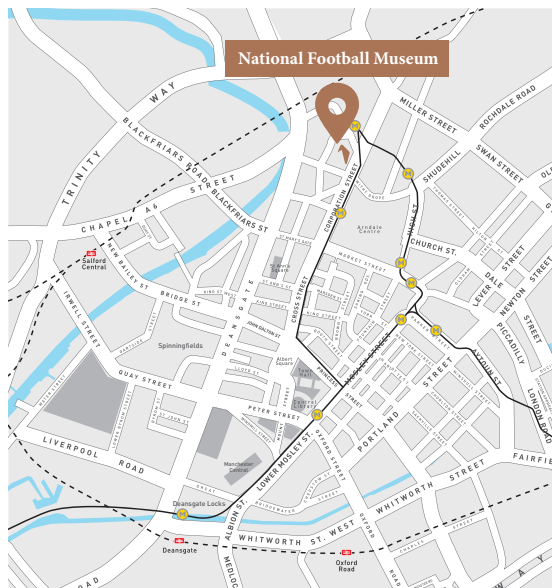
EVENTS AND
CATERING

NATIONAL FOOTBALL MUSEUM

The National Football Museum, located in the iconic Urbis building, offers an exciting space in a perfect city centre location.







National Football Museum

Located in the heart of Manchester city centre, the National Football Museum offers a truly unique dining and event space for up to 400 guests. Stunning architecture, interactive galleries and team building activities over 3 levels make this venue stand out from the crowd.

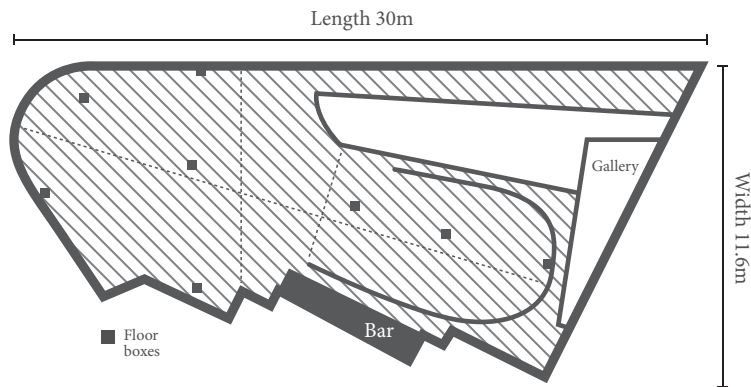
Address

Urbis Building,
Cathedral Gardens,
Todd St, M4 3BG
@ggeventsuk
meet@nfm-events.com
+44 (0) 161 413 3335



The Hall of Fame

Our main event space at the National Football Museum can host spectacular gala dinners, drinks receptions and award ceremonies. In house staging with an accompanying 126" screen provides the ideal focal point for Q&As, live music and presentations.



Total floor space: 348m²

- / Ideal for gala dinners
- / 126" Screen
- / Personalised LED Visual curtain
- / Private entrance
- / Access to National Football Museum galleries

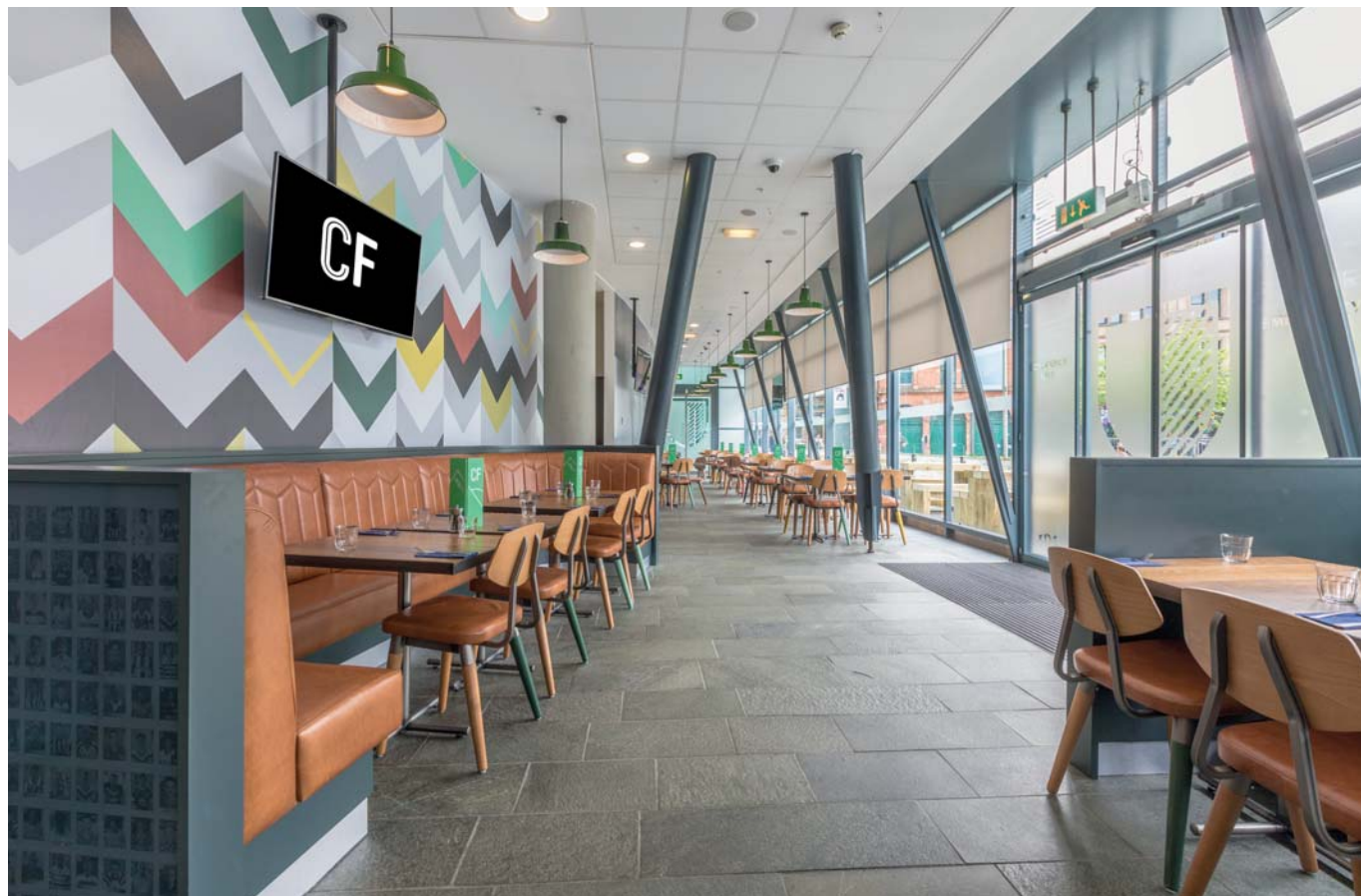
Dimensions

348m²

Reception: 400

Theatre: 200

Dinner Dance: 200



Cafe Football at The National Football Museum

Cafe Football offers a relaxed, open space perfect for networking events and social occasions. Available for private hire, and located in the National Football Museum, the restaurant is ideal for watching live sports in central Manchester.

- / Outdoor space
- / Floor to ceiling windows
- / Complimentary Wi-Fi
- / 9 TV Screens
- / Engaging space
- / Full Sky Sports package
- / Access to National Football Museum exhibitions

Dimensions

112 m²

Reception: 250
Seated buffet: 70
Boardroom: 32



Packages at the National Football Museum

- / Private dining and banqueting menus
- / Canapé packages
- / Bowl food packages
- / Buffet packages
- / Drinks packages
- / Charity menus
- / Children's parties
- / Dry room hire rates
- / Team building activities
- / Interactive games galleries
- / Afternoon tea packages

Prices available on request





EVENTS AND
CATERING



The Peninsula Stadium, home of Salford City Football Club, transforms into a flexible meetings and events space on a non-match day. With two stands and four bespoke areas, the venue is adaptable to suit any occasion.







Address

Moor Lane,
Salford
M7 3PZ
@ggeventsuk
events@salfordcityfc.co.uk
+44 (0) 161 413 3335

Event Spaces at Salford City FC

Salford City Football Club's newly built Peninsula Stadium is a state of the art development based on Moor Lane, which offers guests outstanding pitch views and has even been the star of its own BBC One documentary. The complimentary parking and location make it accessible to all. Host an event with a difference at Salford City Football Club.

- / Complimentary parking
- / Natural light and pitch views
- / Complimentary Wi-Fi
- / TV Screens with Sky Sports
- / Excellent public transport and motorway links
- / Pitch hire and stadium tours available
- / Syndicate rooms available



The 92 Club

This private bar area lends itself to social occasions and special events. With impressive pitch views, informal seating and inbuilt plasma screens, this large space is available for a wide variety of occasions.

- / Largest event space
- / Impressive pitch views
- / Relaxed seating
- / Large bar area
- / Inbuilt plasma screens
- / Complimentary Wi-Fi

Dimensions

118m²

Reception: 120
Seated buffet: 80



David Russell Suite

Host a dining experience with a difference in one of our premier boxes. Overlooking the pitch, the suite offers the best views of Salford City Football Club and is suited for boardroom meetings and private dinners.

-
- / Our most prestigious private suite
 - / Impressive pitch views
 - / Tea and coffee making facilities
 - / Inbuilt plasma screen
 - / Complimentary Wi-Fi

Dimensions

44.86m²

Boardroom: 24

Private dining: 24



Sponsors Lounge

Set up for training workshops, board meetings and presentations, this space offers the ideal environment to get the most out of your meeting.

- / Natural daylight
- / Tea and coffee making facilities
- / Inbuilt plasma screens
- / Complimentary Wi-Fi

Dimensions

43.71m²

U-Shape: 22



Packages at Salford City Football Club

- / Private dining menus
- / Canapè packages
- / Bowl food packages
- / Buffet packages
- / Breakfast meeting rates
- / Drinks packages
- / Dry room hire rates
- / Team building activities
- / Stadium tours and pitch hire

Prices available on request



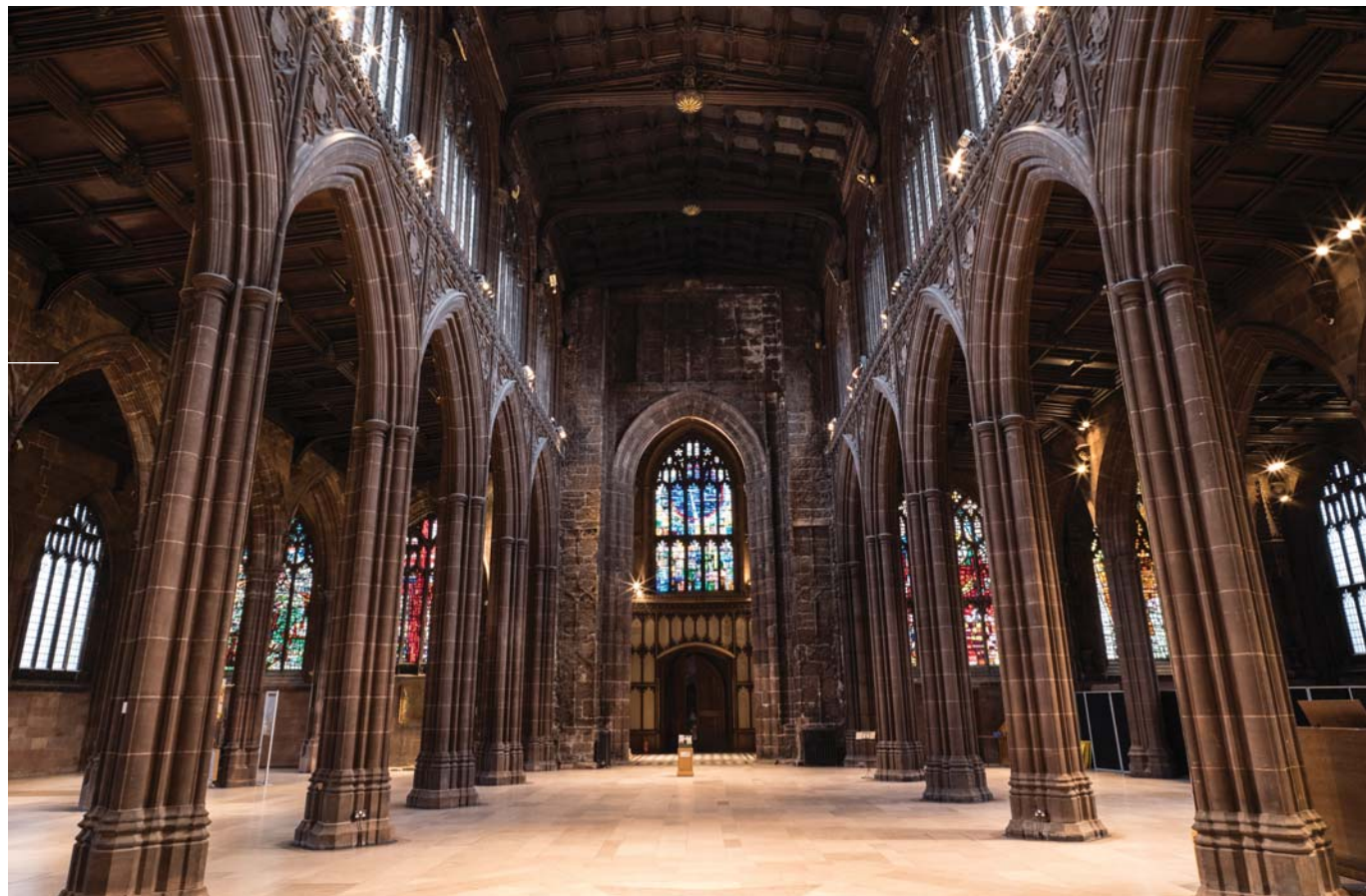


EVENTS AND
CATERING



Located in the heart of Manchester city centre, this
spectacular and historic venue will not fail to impress.







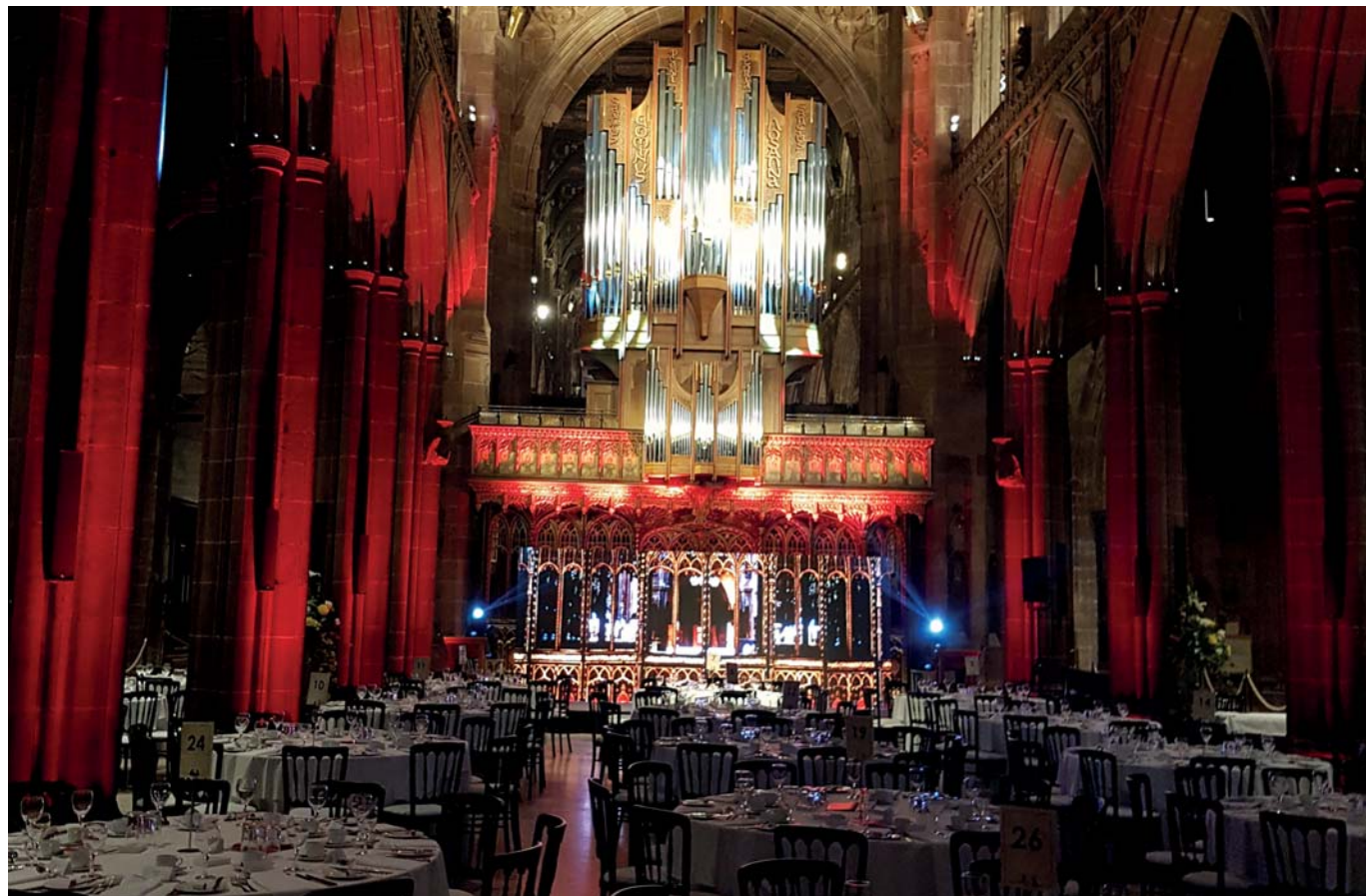
Address

Victoria St,
Manchester
M3 1SX
+ 44 (0) 161 413 3330
events@gghospitality.com

Manchester Cathedral

Built by Henry V and dating back to 1421, Manchester Cathedral is a setting for an array of multi-faceted events including grand gala dinners, weddings and concerts. Your guests will be taken aback by the stunning Gothic architecture and sense of grandeur.

- / Grade I listed building
- / Perfect city centre location
- / 0.1 miles from Manchester Victoria train station
- / 0.4 miles from Manchester Piccadilly train station
- / Fully accessible
- / Ample city centre parking nearby



The Nave

The Nave is the largest and most impressive space in the cathedral, hosting many high-profile events in this iconic setting. The beauty of The Nave is truly unrivalled and can accommodate a private dinner for up to 1000 guests.

- / Perfect for large gala dinners
- / Private dining up to 1000
- / Exquisite bespoke menus
- / Stunning Gothic architecture
- / Beautiful stainedglass windows
- / AV available on request

Dimensions

905m²

Capacity: 1000

Dinner: 940



The Regimental Chapel

The Regimental Chapel expresses the strong relationship with the Duke of Lancaster's Regiment. The chapel houses many remembrance books and regimental colours. It also houses the cathedral baptism font, pieces of art and a breathtaking stained glass window.

- / Capacity of 190 for dinner
- / Beautiful stained glass window
- / Ornat cathedral baptism font

Dimensions

206m²

Dinner: 190



Packages at Manchester Cathedral

/ Private dining and banqueting menus
/ Canapé packages
/ Drinks packages from

Prices available on request





EVENTS AND
CATERING

STOCK EXCHANGE

Set apart in quality, service and design, The Stock Exchange will be a 5-star hotel like no other, creating an unmatched destination for food, drink and accommodation.





Stock Exchange

Located in the heart of the city, Manchester's original Stock Exchange will be transformed into a luxurious boutique hotel, providing a harmonious combination of spectacular spaces, design, and unrivalled experience.

- / 40 unique bedrooms and suites, including The Presidential Suite
- / Private dining for up to 100 guests
- / Events up to 200 guests
- / 'The Man Who Fell To Earth' fine-dining restaurant
- / Rooftop restaurant and bar
- / Opening early 2018

Address

4 Norfolk Street,
Manchester,
M2 1DW
kirsty@thestockexchangehotel.com
+44 (0) 7712551775



EVENTS AND
CATERING

MAHIKI

Tropical Cocktails and Island Grill

Mahiki is the ultimate party destination. With its Tiki décor, delicious fresh fruit cocktails and tropical flowers adorning every Honolulu Honey's hair, a night out is set to be unique in every respect! Perfect for corporate events or cocktail parties. Locations in London, Manchester, Marbella, Dubai and Sardinia.

Address

Central St, Manchester, M2 5WR

manchester@mahiki.com

+44 (0) 161 667 2392





EVENTS AND
CATERING



The Rabbit In The Moon is a contemporary restaurant and cocktail bar in Manchester. Located on the top 2 floors of the iconic Urbis building. We serve a modern interpretation of a Japanese Kaiseki menu created under the guidance of Michael O'Hare.

Address

Urbis Building, Corporation St,
Manchester M4 3BG
therabbitinthemoon.co.uk
info@rabbitinthemoon.com
+44 (0) 161 804 8560



The
Rabbit
In The
Moon

SPACE AGE ASIAN



EVENTS AND
CATERING

— 62

HOTEL FOOTBALL

CAFE FOOTBALL

NATIONAL
FOOTBALL
MUSEUM



Manchester
Cathedral

STOCK
EXCHANGE

MAHIKI
Tropical Cocktails and Island Grill



To find out more about any of our venues
or catering options, please contact:

TEL: 0161 751 0434

EMAIL events@gghospitality.com

